

**GeneTel Laboratories, LLC** *Leader in Proteomics Abs and Abs Arrays*  
1202 Ann Street, Madison, WI 53713 Phone 877-248-4316 Fax 608-257-1385 Email info@genetel-lab.com

**Product:** Rabbit polyclonal antibody against human IP-10 (CXCL10), antigen affinity purified

**Cat. No.** OA0104RC

**Lot Number:** Rb248

**Concentration:** 0.1mg/0.1ml in PBS with 0.02% Na Azide

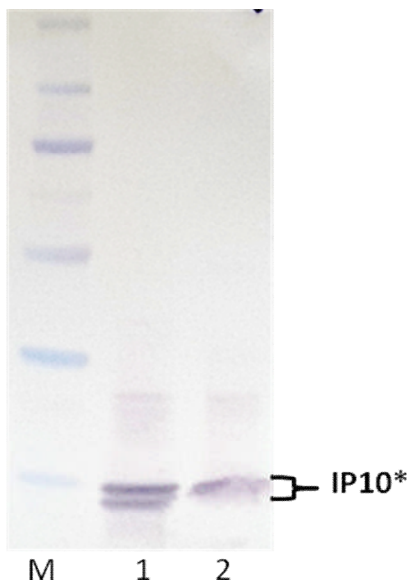
**Immunogen:** Peptide with sequence near IP-10 C-terminus

**Specification:** In western blot, this antibody specifically recognizes recombinant human IP10 protein

**Suggested Usage:** The product can be used for ELISA and immuno blotting. Dilution of 1:1000-1:5000 is suggested for Western blot, the optimal concentration, however, needs to be experimentally determined by users.

**Short Term Storage:** 2-8°C for one week.

**Long Term Storage:** -20°C as an undiluted liquid for up to two years.



#### Western Blot analysis on OA0104RC

M: Molecular weight marker

1: 50ng rhIP10 protein

2: 50ng rhIP10 protein spiked in 293 cell lysate (25ug protein)

1<sup>st</sup> antibody used at 0.2ug/ml

2<sup>nd</sup> antibody used at 1:5000 (AP conjugated donkey anti-rabbit IgG)

Color was developed with chromogenic substrate.

\* Two variants of recombinant IP10 were purified from expression host.