

GeneTel Laboratories, LLC *Leader in Proteomics Abs and Abs Arrays*
1202 Ann Street, Madison, WI 53713 Phone 877-248-4316 Fax 608-257-1385 Email info@genetel-lab.com

Product: Chicken antibody (IgY) specifically binds to bovine A1 beta casein protein.

Catalog Number: OA0101

Lot Number: 1191

Size: 100ul affinity pure IgY at 0.5mg/ml in PBS with 0.02% Na Azide

Immunogen: PGPIHNSLP peptide conjugated to KLH

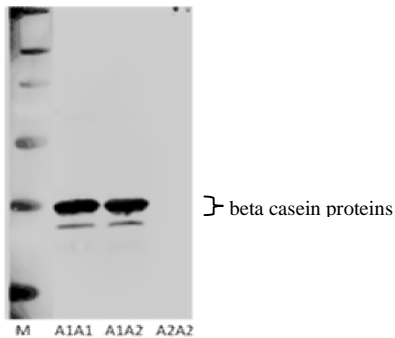
Specification: In western blot, this antibody specifically recognizes A1 but not A2 beta casein proteins in cow milk

Suggested Usage: The product can be used for ELISA and immuno blotting. Dilution of 1:1000-1:5000 is suggested for Western blot, the optimal concentration, however, needs to be experimentally determined by users.

Short Term Storage: 2-8°C for one week.

Long Term Storage: -20°C as an undiluted liquid for up to two years.

Please feel free to call us if you have any question regarding to this product or any other GeneTel's products.



Example

Western Blot Analysis of Chicken anti-A1 casein antibody

M: molecular marker

A1A1: 50nL milk from the cow baring A1/A1 alleles

A1A2: 50nL milk from the cow baring A1/A2 alleles

A2A2: 50nL milk from the cow baring A2/A2 alleles

1st antibody (OA0101) used at 0.1ug/ml

2nd antibody (Cy3-Donkey anti Chicken IgY) used at 1:4000