

GeneTel Laboratories, LLC *Leader in Proteomics Abs and Abs Arrays*
1202 Ann Street, Madison, WI 53713 Phone 877-248-4316 Fax 608-257-1385 Email info@genetel-lab.com

Product: Rabbit Anti-bovine Casein polyclonal antibody, affinity purified.

Catalog Number: OA0089

Lot Number: 121024

Size: 0.1ml affinity purified Abs, 0.5mg/ml in PBS with 0.02% Na Azide

Immunogen: Bovine casein protein.

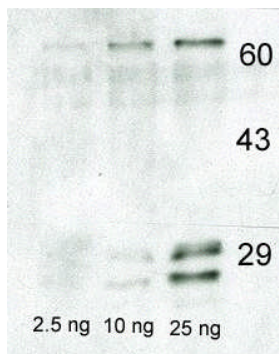
Specification: OA0089 binds to casein protein of both alpha and beta-chain MW (). The product may cross react with casein from other mammalian species.

Suggested Usage: The product can be used at 1:2,000 to 1:10,000 for immunoblot testing or in ELISA. User needs to optimize the concentrations in assay. The product can be used in combination with GeneTel's anti-rabbit IgG conjugates such as GRHRP in Western Blot analysis.

Short Term Storage: 2-8°C for one week.

Long Term Storage: -20°C as an undiluted liquid for up to two year.

Please feel free to call us if you have any question regarding to this product or any other GeneTel's product.



Western Blot analysis of OA0089 rabbit anti-bovine casein on bovine milk (2.5ng-25ng). OA0089 1:5000; secondary Ab 1:10000; OA0089 binds to casein alpha- and beta chain.